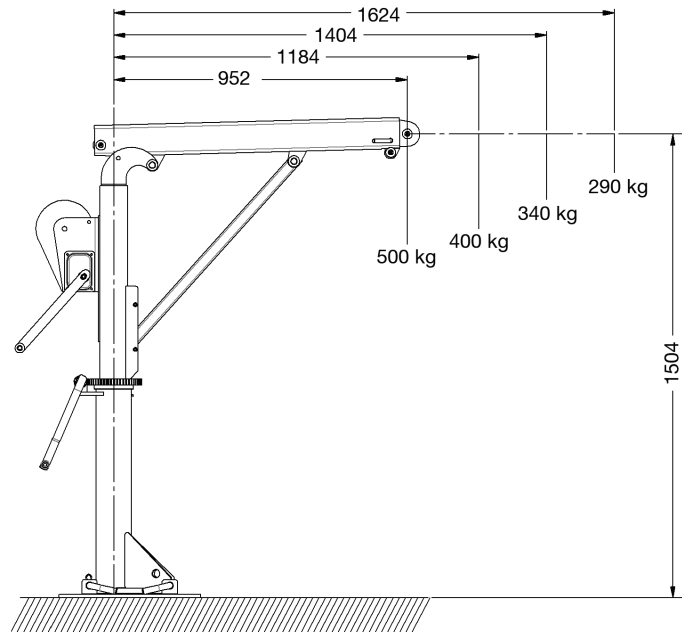
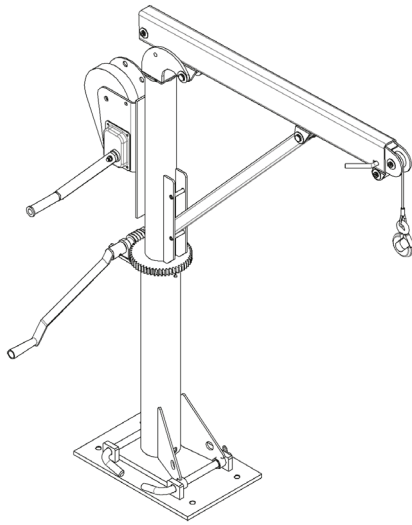


# Strong Arm HOIST



## Typical applications

Suitable for plant equipment, workshops, manufacturing and factories.

## Features

<b>Lifting capacity:</b>	500 kg
<b>Usage:</b>	Base plate be bolted to a concrete floor. (Can be folded for storage.)
<b>Operation method:</b>	Hand winch
<b>Dimensions (L/W/H)</b>	1171/508/1557 mm

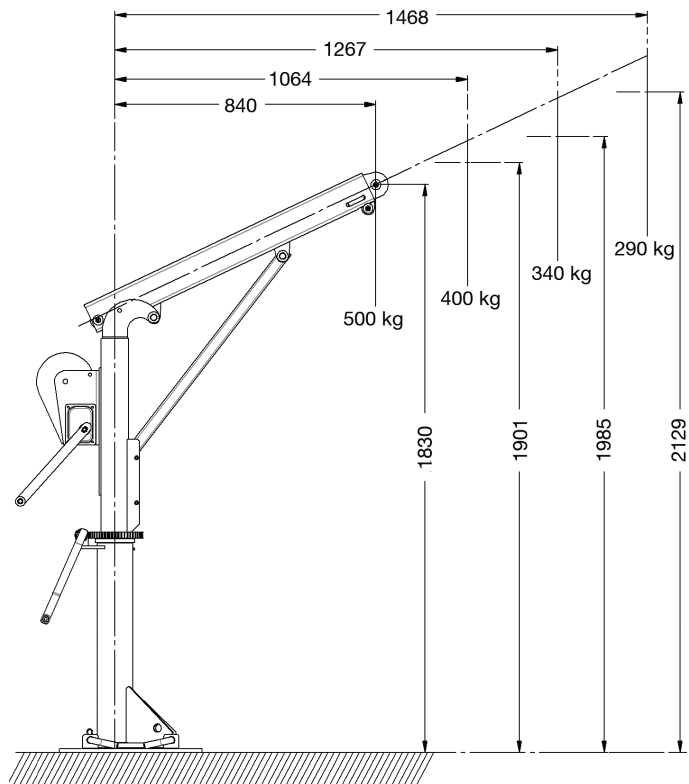
The Strong Arm is a cantilever crane designed to be statically bolted to a concrete floor (eg. loading bay).

An integral piece of plant equipment used for lifting loads between floors—while effectively eliminating the need for manually carrying heavy, bulky equipment on stairs, or the use of a forklift.

A hand winch is low-g geared to ensure loads of up to 500 kg can be easily raised, while precise positioning of the load is achieved through geared hand-slewing of the mast.

Extra lift height can be achieved by raising the boom (prior to lifting the load).

The mast is fitted to the base plate with two pins. Remove the first pin and the mast can be folded down for easy travel. Remove the second (pivot) pin and the Strong Arm can be stowed away.



**Please note:** Supply only. Fitting is as per specific site requirements. Onsite installation and mounting must be performed by a qualified engineer.

## ORDER CODE

Strong Arm hoist 500 kg

SIS4HW